



# THE NEW MUSSO

## SsangYong Ireland

Famalco House, Montone Business Park, Oak Close,  
Dublin 12 D12DFC6, Republic of Ireland

+353 1 524 0024  
info@ssangyong.ie  
www.ssangyong.ie

Ssangyong Ireland  
 ssangyongire  
 SsangYong Automotive Ireland

Some of the equipment shown in this brochure is optional and may not be available on all models or in all markets.  
All specifications are subject to change without notice.  
Please contact your local dealer for the latest information

SYMC 202106 EU\_RHD ENGLISH Printed in KOREA



# ROAD TO ADVENTURE

The new Musso is finally here with a style that is bolder and more dynamic than ever.

Eye-catching and confident, the new Musso maximizes adventure both on- and off-road.



# STUNNING DESIGN AGGRESSIVELY DYNAMIC

With its bold style and voluminous body lines, the new Musso offers the ideal proportions of a traditional pickup, while projecting a powerful, eye-catching presence. It excels off-road and is equally at home in the city. It is the perfect partner for work or play.

Chromed radiator grill





## EXPRESSIVE AND DOMINANT ON EVERY ROAD

Befitting its sporty and dynamic exterior, the new Musso offers a powerful driving experience. Responsive and agile, the new Musso delivers best-in-class performance. Musso has it all: The off-road capabilities you have come to expect of a pickup truck and the refined manners of a sedan in urban driving and highway cruising.

4X4 Emblem (4WD only)





## ENJOY YOUR ACCOMMODATING

If you have a taste for adventure but also need a reliable workhorse for everyday commuting, experience the new Musso and enjoy the best of both worlds. Musso gives you a wide, long cargo space for extra versatility. Whether you are hauling sports gear or work equipment, the capable new Musso has more than enough space to meet your requirements.





# PREMIUM INTERIOR

Step inside the luxurious cabin of the new Musso Grand and you will be impressed by the range of comfort and convenience features. The use of premium materials throughout the cabin reinforces the luxurious image while the comprehensive range of standard specification features demonstrate careful consideration for occupant needs.

7" Super-vision LCD cluster



Animation mode



Regular mode



RPM-linked mode

Heated steering wheel cover



3D around-view monitoring system



Apple CarPlay and Android Auto  
Users may connect their smart phone to the display to make phone calls, check messages and listen to music while on the road.



A/T center console

## SOPHISTICATED AND MORE SPACIOUS THAN EVER.

The new Musso offers best-in-class spaciousness and comfort.

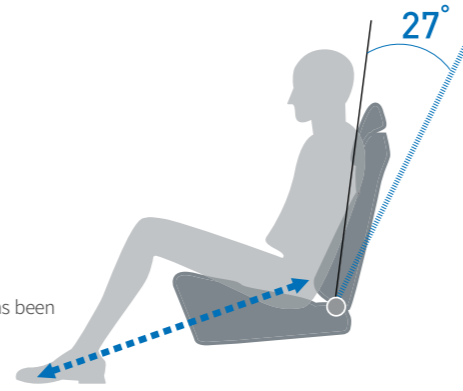
While Musso's exterior projects visual dynamism, the cabin is all about serene luxury.

Sleek and clean, the cabin has that wide open feeling and optimizes comfort throughout.

Soft and smooth to the touch, the Nappa leather seats reflect the Musso's meticulous attention to quality and detail.

### Ample room in back

The space inside the cabin of the Musso & Musso Grand has been optimized to provide a flat floor in the second row. Legroom is therefore outstanding, while the rear seats also incline 27 degrees for the most relaxing ride.



Heated front and rear seats



Ventilated front seats



A Pillar Grab Handles



# THE ROAD TO FREEDOM IS THRILLING

Experience the thrill of a lifetime with the new Musso Grand.

The four-wheel drive (4 x 4) system ensures optimal distribution of drive power to the front and rear wheels according to road and driving conditions, ensuring maximum traction and safety.

Whether you choose 2.2 Diesel engines, you can count on Musso & Musso Grand to deliver powerful, highly responsive performance.

## E-XDI 220 DIESEL ENGINE (AT)

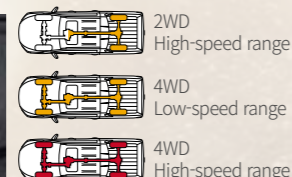
**187** Max Power  
ps / 3,800rpm

**420** Max Torque  
Nm / 1,600~2,600rpm



## PART-TIME 4WD

Part-time four-wheel drive allows the driver to choose when to activate the system, depending upon changing conditions on or off the road. Operation safety and efficiency are thus superior to what by the full-time 4WD system provides.



## AISIN 6-SPEED AUTOMATIC TRANSMISSION

A high ratio spread optimises shift quality under diverse road conditions. Control of changes in speed is solid, enabling the automatic transmission to maintain a smooth shifting feel. The manual mode (shifting up or down) delivers rapid responsiveness for a more dynamic driving performance.



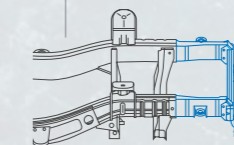




## BALANCED DRIVING AND MAXIMUM STABILITY

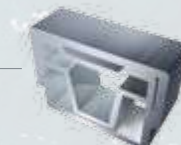
Unlike the traditional monocoque structure, the new Musso Grand's engine and suspension are mated to a new quad frame design: Built with ultra-high tensile strength steel, the quad structure is highly effective in isolating road shock when driving over rugged terrain or speed bumps, thus ensuring optimal rigidity and stability.

While the new Musso's five-link suspension can load up to 400 kg, the new Musso Grand's five-link suspension is designed to haul up to 500 kg while its rear leaf spring suspension can easily handle up to 700 kg loads. In addition, these suspensions all deliver smooth, stable driving comfort, even in an off-road environment.



**Crash zone box**

The 'crash zone' refers to that part of frame that conveys the most shock from a frontal collision to the inside of the cabin. This 'box' is designed to absorb that force, thereby protecting the people inside.



**Quad frame**

Unlike with a monocoque structure, the engine and suspension system are attached directly to the frame, blocking the heavy shock experienced when traveling over rough road surfaces or speed bumps and ensuring maximum handling stability.



**Leaf-spring rear suspension (Musso Grand only)**

Thanks to superb cargo-towing capacity, the Musso Grand continues to ride smoothly and handle wonderfully even when heavy loads are brought along.



**Five-link rear suspension**

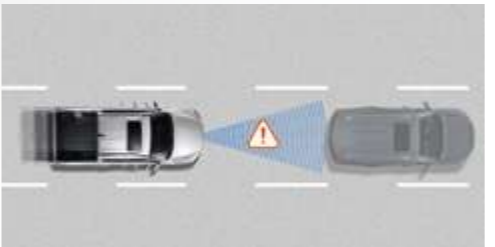
The axle is connected on the left and right to provide a smooth ride even when the road surface gets rough. Such a system is preferred for off-road operation.



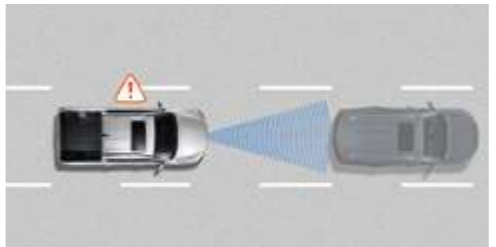
# TAKE CONTROL, WHEREVER YOU GO

The Musso & Musso Grand's advanced driving safety assist system helps you to drive safely in all types of road environments. The Electronic Stability Program prioritizes occupant safety by helping maintain directional stability when one or more tires have lost traction while Autonomous Emergency Braking (AEB) can minimize the risk of a serious collision by automatically deploying the brakes when a forward collision is expected.

## THE LATEST TECHNOLOGICAL



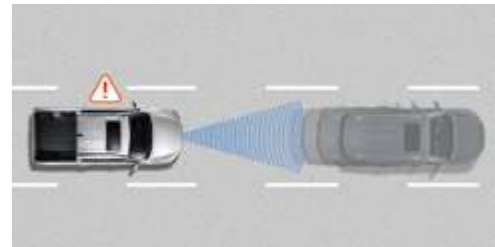
**Autonomous Emergency Braking (AEB)**  
Helps avoid or mitigate collision effects by detecting moving or stalled vehicles and warning the driver in advance.



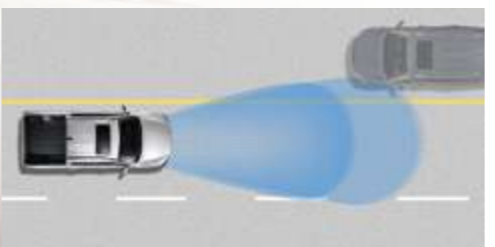
**Forward Collision Warning (FCW)**  
Alerts the driver when another vehicle or pedestrian appears in the path of the vehicle.



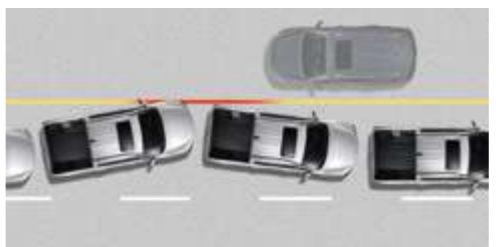
**Lane Departure Warning (LDW)**  
Warns the driver whenever the vehicle begins to move out of its lane unless the directional indicators are on in that direction.



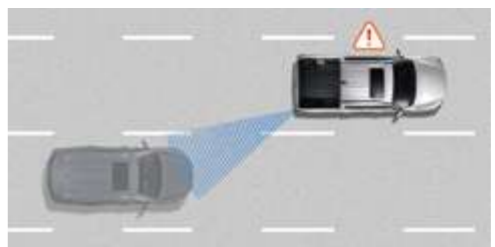
**Front Vehicle Start Warning (FVSW)**  
Captures driver attention through a visual pop-up and audible sound that the vehicle directly in front is pulling away.



**Smart High Beam (SHB)**  
Automatically lowers the high beams when an approaching vehicle is detected, making night-driving easier.



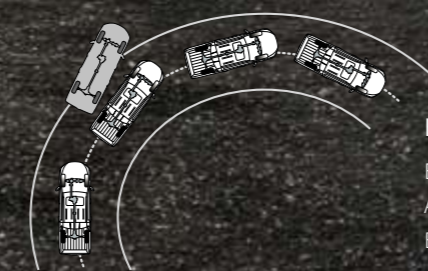
**Driver Attention Warning (DAW)**  
If the DAW system senses the driver's attention level has been significantly reduced, it will give audible warning and graphic on cluster.



**Blind Spot-Detection Warning (BSW)**  
Senses vehicles coming up in the blind spot behind or alongside and warns the driver with a flashing light on the outside mirror.



**Rear Cross-Traffic Alert (RCTA)**  
Assists the driver when backing up by detecting the presence of vehicles approaching on either side in the rear.



Electronic Stability Program (ESP)  
 Electronic Stability Program (ESP) &  
 Anti-Rollover Protection (ARP) &  
 Brake Assist System (BAS)

## A COMMANDING PRESENCE OVER ALL TYPES OF TERRAIN

For uncompromising safety in the event of a collision, the new Musso Grand is equipped with advanced airbags including front, side and curtain airbags that protect the driver and passengers. Musso's Electronic Stability Program continuously monitors road conditions to ensure directional stability, and whenever necessary, ESP will automatically adjust engine output and braking power to individual wheels to prevent the loss of directional control. Additionally, the locking differential improves traction on steep and slippery slopes for even more powerful towing performance.



### 6 AIRBAGS

- |      |                                     |      |                    |
|------|-------------------------------------|------|--------------------|
| 1    | Driver's airbag                     | 2    | Passenger's airbag |
| 3, 4 | Driver's & passenger's side airbags | 5, 6 | Curtain airbags    |



**Locking differential**  
 On muddy or snowy surfaces, one wheel may slip or be lifted into the air. In this case, the locking differential forces both wheels on an axle to turn in unison, allowing the vehicle to recover its traction.



**Emergency Stop Signal (ESS)**



**Hill Start Assist (HSA)**



**Hill Descent Control (HDC)**

# STYLE & CONVENIENCE

## EXTERIOR



Remote-controlled windows with smart key



Automatic closing system



HID head lamps



Rear combination lamps



LED front fog lamps



Headlamp escort function



Welcome system



Safety powered window



Solar control glass and wiper deicer



Rear camera



Tyre pressure monitoring system /  
Tyre repair kit



Safety-powered sunroof



Fashionable roof rails



Reinforced tailgate



Parking assist system

## INTERIOR



Cluster with 3.5" trip computer



8" smart audio



2 din audio with MP3 player



Dual-zone fully automatic air-conditioner/  
Manual air-conditioner



Integrated switch module



Remote control switches and cruise control  
system on the steering wheel



Telescopic steering wheel system



Tilt steering wheel system



Front camera module with rain-sensing  
and automatic light control unit



USB port and power outlet



Sunvisor



Overhead console



2nd row cup-holder



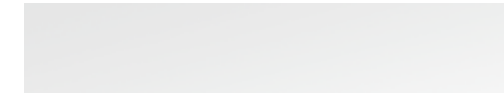
Glovebox and centre console box



Deck hook

# COLOR GUIDE

## EXTERIOR COLOR



Grand White (WAA)



Silky White Pearl (WAK)



Marble Gray (ACM)



**New** Amazonia Green (GAM)



Indian Red (RAJ)



Atlantic Blue (BAU)



**New** Galaxies Gray (ADB)



Space Black (LAK)

## INTERIOR COLOR



Black seats with black headlining



Nappa leather

TPU  
(Thermoplastic polyurethane)

Flat woven



Black seats with gray headlining



Nappa leather

TPU  
(Thermoplastic polyurethane)

Flat woven



Brown seats with black headlining



Nappa leather

## WHEELS



17" Steel Wheels



17" Alloy Wheels



18" Alloy Wheels



18" Black Alloy Wheels



20" Sputtering Wheels

# FEATURES LIST

## MECHANICAL

e-XDi 220 2.2L diesel engine with CDPF
6-speed manual transmission with gearshift knob
6-speed automatic with thumbs-up switch on gearshift knob
Part-time 4WD with shifting on the fly
Double-wishbone front suspension system with coil springs
Five-link rear suspension system with coil springs
Front-ventilated disc brake and rear disc brake
Hand parking brake
75L fuel tank
Trailer hitch mounting
Voltage Stabilizer
Leaf spring rear suspension (Musso Grand only)

## SEATS

8-way power-adjustable driver's seat
6-way power-adjustable front passenger's seat
Folding 2 <sup>nd</sup> -row seats with folding centre armrest
Heated seats for front and rear
Front ventilated seats
Sliding front headrests
Premium Nappa black leather seat cover
Premium Nappa brown leather seat cover
TPU (thermoplastic polyurethane) seat cover
Cloth seat cover

## AIR CLIMATE

Front auto air conditioning system (dual-temperature zone)
Front manual air conditioning system
Air quality control system
Rear air vent on centre console back
PTC (positive temperature coefficient) heater with diesel engine

\*Some of features may be optional or not be available according to market. Please contact your local dealer for the exact details regarding vehicles sold in your area.

## EXTERIOR

Integrated projection headlamps
25W HID headlamps
Outside rearview mirrors with side repeater and puddle lamps
Aero-blade wipers
Outside door handles in body colour and with hidden key hole
Clean sill doors
Fashionable roof rack
Pole antenna / Shark antenna
Safety power sunroof
Front & rear fog lamps
Daytime running lamps
Deck cover

## INTERIOR

Sunvisors with illumination
Glovebox with lamp and key lock
Mobile ashtray
A-pillar grip handle
B-pillar assist grip
Stainless-steel front-door scuff
Polypropylene rear door scuff
Leather cover for manual transmission gear knob
Painted inside door handle
Floor mat

## STEERING

Hydraulic power steering
Speed-sensitive power steering
Leather steering wheel cover
Manually-controlled tilt and telescopic steering
Electric steering column lock
Heated steering wheel cover

## SAFETY

Blind Spot-Detection Warning (BSW)
Rear Cross Traffic Warning (RCTW)
Lane Change-Collision Warning (LCW)
High-strength-steel construction
Ultra-rigid Quad Frame for greater strength, less vibration and noise
Door impact beams for optimal protection from side collisions
Electronic stability programme (ESP) with traction control system (TCS), hill descent control (HDC), active roll-over protection (ARP) and emergency stop signal (ESS)
Dual airbags for driver and front passenger
Side airbags for driver and front passenger
Curtain airbags for front and rear passengers
Front seatbelt load limiters and pre-tensioners
Airbag on/off switch for front passenger
Seatbelt reminder for the driver and front passenger
Child seat anchorage
Childproof safety lock
Speed-sensitive door lock
Tyre pressure monitoring system (TPMS)
Visual VIN
Autonomous Emergency Braking (AEB)
Lane Departure Warning(LDW)
Smart High Beam(SHB)
Front Vehicle Start Warning(FVSW)
ABS with rear disc brake

## WHEEL AND TYRE

17" steel wheels 235/70 tyres
17" alloy wheels 235/70 tyres
18" alloy wheels 255/60 tyres
18" black alloy wheels 255/60 tyres
20" sputtering wheels 255/50 tyres (Chrome finish)
Tyre repair kit

## WHEEL AND TYRE

17" steel wheels 235/70 tyres
17" alloy wheels 235/70 tyres
18" alloy wheels 255/60 tyres
18" black alloy wheels 255/60 tyres
20" sputtering wheels 255/50 tyres (Chrome finish)
Tyre repair kit

## WHEEL AND TYRE

Full-sized spare tyre
-----------------------

## CONVENIENCE

Electronic cruise control
Windshield wiper de-icer
Electrochromic inside rearview mirror
Headlamp leveling device
Auto light control and rain sensing wiper
Outside door mirrors that can be electrically controlled, folded and heated
Solar control windscreen glass
Tinted front & rear door glass
Safety power windows
One-touch triple turn-signal lamp
Folding remote keyless entry system
Illuminated ignition key slot
Supervision cluster with 7" colour TFT-LCD trip computer
Segment cluster with 3.5" mono TFT-LCD trip computer
2-Din audio system with MP3 player
SD 8" smart audio with rearview camera
HD 9.2" navigation with rearview camera
3D around-view monitoring (AVM) system
Four speakers / Six speakers
USB and AUX. slot

Bluetooth hands-free
Audio remote control switches on steering wheel
Car connectivity (Apple CarPlay & Google Android Auto)
Front obstacle warning system (4 sensors)
Rear obstacle warning system (4 sensors)
Dual smart-key system, including window control and auto closing functions
Deck hook

# TECHNICAL DATA

\* The fuel economy can vary according to road conditions or driver's habits. \* The below technical data can vary slightly by regional certification requirements or sales specifications.

	ENGINE		MUSSO GRAND Diesel 2.2			
	DRIVEN WHEELS	TRANSMISSION	2WD		Part time 4WD	
	EMISSION		6MT	6AT	6MT	6AT
EXTERIOR DIMENSION			<b>Euro 6</b>			
	Overall length	mm	5,405			
	Overall width	mm	1,950			
	Overall height	mm	1,855 (With roof rack 1,885)			
	Wheelbase	mm	3,210			
	Tread	Front	mm	1,640 (235/70R17)		
		Rear	mm	1,640 (235/70R17)		
	Overhang	Front	mm	890		
		Rear	mm	1,305		
	Minimum clearance	mm	220 (Between the axles clearance)			
Minimum turning radius	m	6.09				
WEIGHT	Gross vehicle weight	kg	3,150 (Leaf), 2,890 (5link)		3,250 (Leaf), 2990 (5link)	
	Kerb weight	kg	2,060~2,156 (Leaf), 1,990~2,100 (5link)		2,070~2,166 (Leaf), 1,995~2,105 (5link)	
		kg	2,600 (Leaf), 2,600 (5link)		2,600 (Leaf), 2,600 (5link)	
	Gross trailer weight	Braked	kg	2,600 (Leaf), 2,600 (5link)		
		Unbraked	kg	750		
ENGINE	Fuel	-	Diesel			
	Fuel tank	ℓ	75			
	Capacity	cc	2,157			
	Bore X stroke	mm	86.2 X 92.4			
	Compression ratio	-	15.5:1			
	Number of cylinders	-	4 in-line			
	PERFORMANCE	Max. power	kW/rpm	133.1 / 3,800		
ps/rpm			181/3,800(6MT), 187/3,800(6AT)			
Max. torque		Nm/rpm	400/1,400~2,800(6MT), 420/1,600~2,600(6AT)			
		kgf.m/rpm	40.8/1,400~2,800(6MT), 42.8/1,600~2,600(6AT)			
Max. speed	km/h	178	172	178	172	
FUEL CONSUMPTION	CO <sub>2</sub> (combined)	g/km	237.0 (Leaf), 231.0 (5link)	253.0 (Leaf), 252.0 (5link)	245.0 (Leaf), 237.0 (5link)	264.0 (Leaf), 259.0 (5link)
	Combined	ℓ/100km	9.039 (Leaf), 8.810 (5link)	9.643 (Leaf), 9.603 (5link)	9.339 (Leaf), 9.039 (5link)	10.077 (Leaf), 9.872 (5link)
	Low phase	ℓ/100km	10.945 (Leaf), 10.696 (5link)	12.671 (Leaf), 12.861 (5link)	11.282 (Leaf), 10.828 (5link)	13.654 (Leaf), 13.005 (5link)
	Mid phase	ℓ/100km	8.409 (Leaf), 8.228 (5link)	9.287 (Leaf), 9.285 (5link)	8.961 (Leaf), 8.514 (5link)	10.012 (Leaf), 9.644 (5link)
	High phase	ℓ/100km	7.952 (Leaf), 7.675 (5link)	8.464 (Leaf), 8.323 (5link)	8.197 (Leaf), 7.933 (5link)	8.808 (Leaf), 8.614 (5link)

MUSSO Diesel 2.2			
2WD		Part time 4WD	
6MT	6AT	6MT	6AT
<b>Euro 6</b>			
5,095			
1,950			
1,840 (With roof rack 1,870)			
3,100			
1,640 (235/70R17)			
1,640 (235/70R17)			
890			
1,105			
215 (Between the axles clearance)			
5.91			
2,830		2,880	
1,980~2,077	1,990~2,092	2,080~2,177	2,090~2,192
2,800	2,800	2,800	3,000
750			
Diesel			
75			
2,157			
86.2 X 92.4			
15.5:1			
4 in-line			
133.1 / 3,800			
181/3,800(6MT), 187/3,800(6AT)			
400/1,400~2,800(6MT), 420/1,600~2,600(6AT)			
40.8/1,400~2,800(6MT), 42.8/1,600~2,600(6AT)			
195	185	195	185
222.0	242.0	234.0	253.0
8.467	9.222	8.924	9.641
10.392	12.351	10.773	12.809
7.913	8.982	8.394	9.374
7.347	8.057	7.862	8.424

# DIMENSIONS



1,640mm  
1,950mm



1,640mm



3,210mm  
5,405mm



3,100mm  
5,095mm